

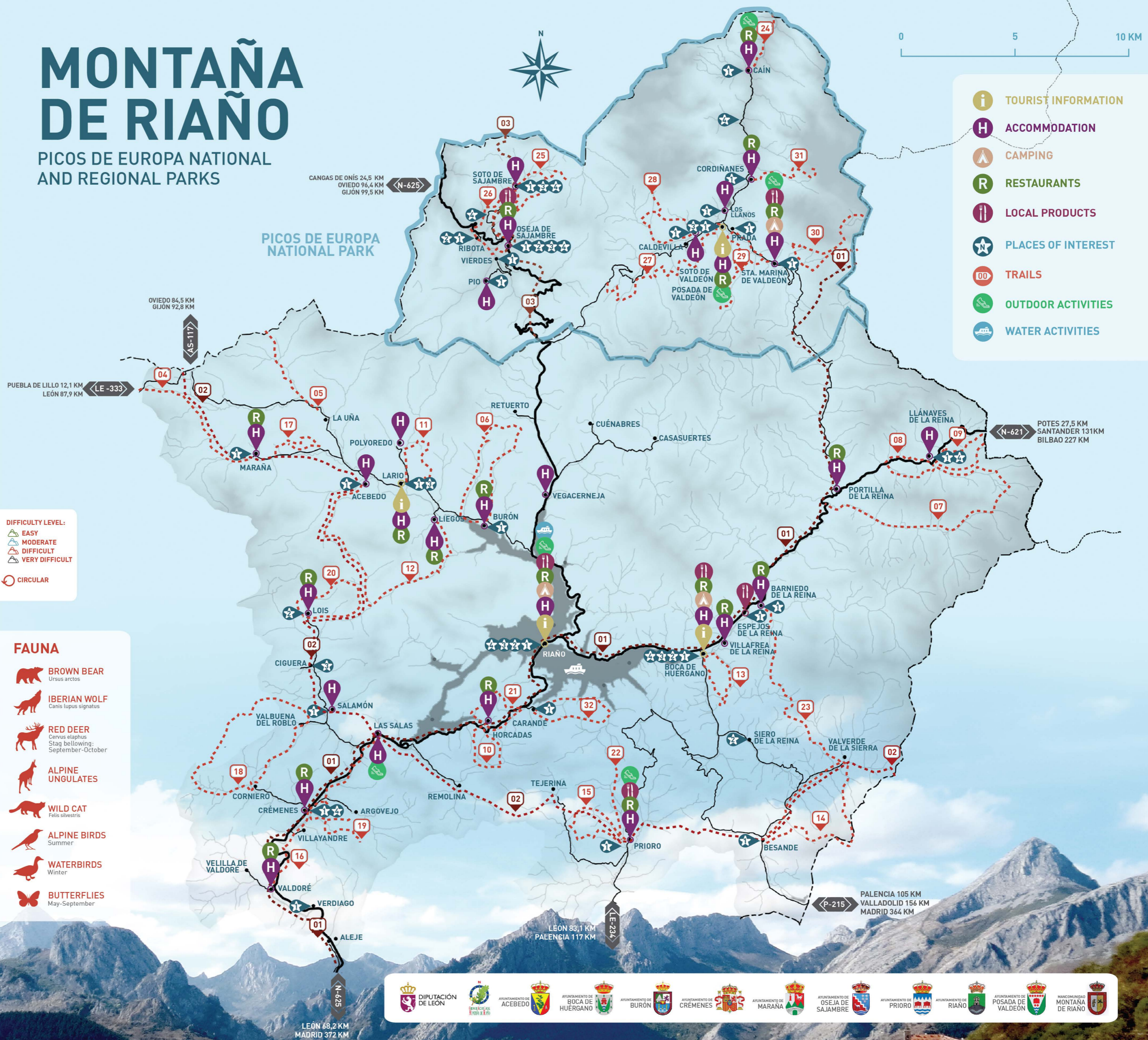
TRAILS

- 01 RUTA VADINIENSE**
 FROM: Pto. de Pandetrave
 DISTANCE: 58,6 km
- 02 GR 1 SENDERO HISTORICO**
 FROM/TO: Valverde-Pto. Tarna
 DISTANCE: 64,1 km
- 03 GR - PNPE - 201 RUTA DEL ARCEDIANO**
 START POINT: Puerto del Pontón
 DISTANCE: 27,5 km
- 04 PR-LE 19 PUERTO DE LAS SEÑALES**
 START POINT: Maraña
 DISTANCE: 6,8 km
- 05 PR - LE 20 PUERTO DE VENTANIELLA**
 START POINT: La Uña
 DISTANCE: 4,7 km
- 06 PR-LE 21 MIRVA RABANAL**
 START POINT: Burón
 DISTANCE: 13 km
- 07 PR - LE 22 VALLE LECHADA - VALLE NARANCO**
 START POINT: Llánaves de la Reina
 DISTANCE: 14,6 km
- 08 PR-LE 23 ARROYO DE ORPIÑAS**
 START POINT: Llánaves de la Reina
 DISTANCE: 5 km
- 09 PR - LE 24 PUERTO DE SAN GLORIO**
 START POINT: Llánaves de la Reina
 DISTANCE: 8,6 km
- 10 PR-LE 25 PUERTO DE HORCADAS**
 START POINT: Horcadas
 DISTANCE: 6,1 km
- 11 PR-LE 31 MONTE RANEDO**
 START POINT: Lario
 DISTANCE: 6,8 km
- 12 PR - LE 32 LIEGOS - ACEBEDO**
 START POINT: Liegos - Acebedo
 DISTANCE: 16,8 km
- 13 PR-LE 33 MATAPIOJOS**
 START POINT: Boca de Huérgano
 DISTANCE: 7,5 km
- 14 PR - LE 34 ARBILLOS**
 START POINT: Besande
 DISTANCE: 15,3 km
- 15 PR-LE 35 CORRAL DE LOS LOBOS**
 START POINT: Prio
 DISTANCE: 7,3 km
- 16 PR-LE 36 CAMINO REAL**
 START POINT: Valdoré
 DISTANCE: 10 km
- 17 PR - LE 48 MONTE LA BOYERIA**
 START POINT: Maraña
 DISTANCE: 5,8 km
- 18 PR-LE 49 CUATRO PUEBLOS**
 START POINT: Corniero
 DISTANCE: 19 km
- 19 PR - LE 50 PUERTO DE TEJEDO**
 START POINT: Argovejo
 DISTANCE: 5,2 km
- 20 PR - LE 51 PUERTO DE LLORADA**
 START POINT: Lois
 DISTANCE: 8,3 km
- 21 PR-LE 52 COLLADO EL BAILE**
 START POINT: Horcadas
 DISTANCE: 6,6 km
- 22 PR - LE 53 CANADA REAL LEONESA**
 START POINT: Prio
 DISTANCE: 4,3 km
- 23 PR-LE 54 VALVERDE -BARNIEDO**
 START POINT: Valverde de la Sierra
 DISTANCE: 11,1 km
- 24 PR-PNPE-3 RUTA DEL CARES**
 START POINT: Caín
 DISTANCE: 12 km
- 25 PR-PNPE-9 SOTO-VEGABAÑO**
 START POINT: Soto de Sajambre
 DISTANCE: 9,8 km
- 26 PR-PNPE-10 PUEBLOS DE SAJAMBRE**
 START POINT: Oseja de Sajambre
 DISTANCE: 10,2 km
- 27 PR-PNPE-11 PANDERRUEDAS-POSADA**
 START POINT: Posada de Valdeón
 DISTANCE: 13,5 km
- 28 PR-PNPE-12 VEGA DE LLOS**
 START POINT: Posada de Valdeón
 DISTANCE: 13,5 km
- 29 PR-PNPE-14 MONTO (VALLE DE PRADA)**
 START POINT: Prada
 DISTANCE: 11,6 km
- 30 PR-PNPE-15 SENDA DEL MERCADILLO**
 START POINT: Sta. Marina Valdeón
 DISTANCE: 13,2 km
- 31 PR-PNPE-16 COLLADO JERMOSO**
 START POINT: Cordiñanes
 DISTANCE: 4,1 km
- 32 PR VALLE DE SALIO**
 START POINT: Carande
 DISTANCE: 7,1 km

MONTAÑA DE RIAÑO

PICOS DE EUROPA NATIONAL AND REGIONAL PARKS

PICOS DE EUROPA NATIONAL PARK



- i TOURIST INFORMATION**
- H ACCOMMODATION**
- A CAMPING**
- R RESTAURANTS**
- i LOCAL PRODUCTS**
- ★ PLACES OF INTEREST**
- ⋯ TRAILS**
- 🌿 OUTDOOR ACTIVITIES**
- 🚣 WATER ACTIVITIES**

- DIFFICULTY LEVEL:**
- EASY
 - MODERATE
 - DIFFICULT
 - VERY DIFFICULT
 - CIRCULAR

- FAUNA**
- BROWN BEAR**
Ursus arctos
 - IBERIAN WOLF**
Canis lupus signatus
 - RED DEER**
Cervus elaphus
Stag following: September-October
 - ALPINE UNGULATES**
 - WILD CAT**
Felis silvestris
 - ALPINE BIRDS**
Summer
 - WATERBIRDS**
Winter
 - BUTTERFLIES**
May-September